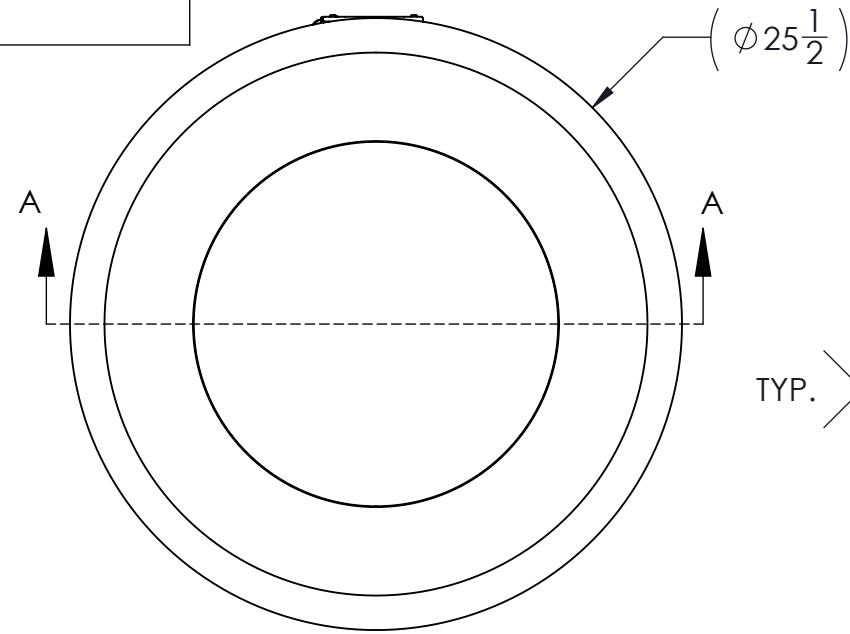
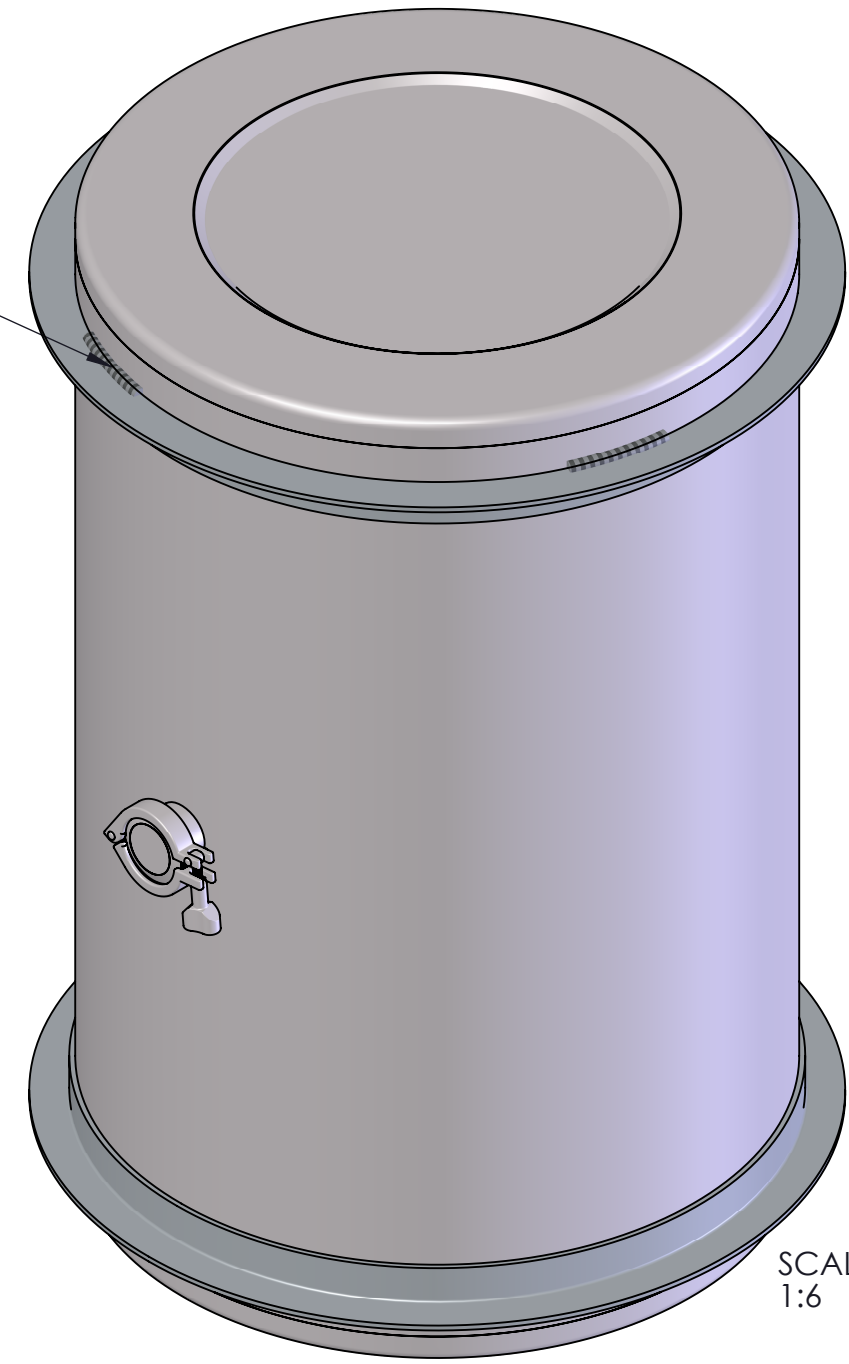


IW60TB

ECN # or INIT	REV	DESCRIPTION	DATE
	A	RELEASED	23-MAR-2017



TYP. (0.2) (3.5-18.5)



SCALE 1:6

NOTES:

1. TO DETERMINE GREATER ACCURACY OF ANY DIAMETRIC DIMENSION, MEASURING OF CIRCUMFERENCE IS REQUIRED

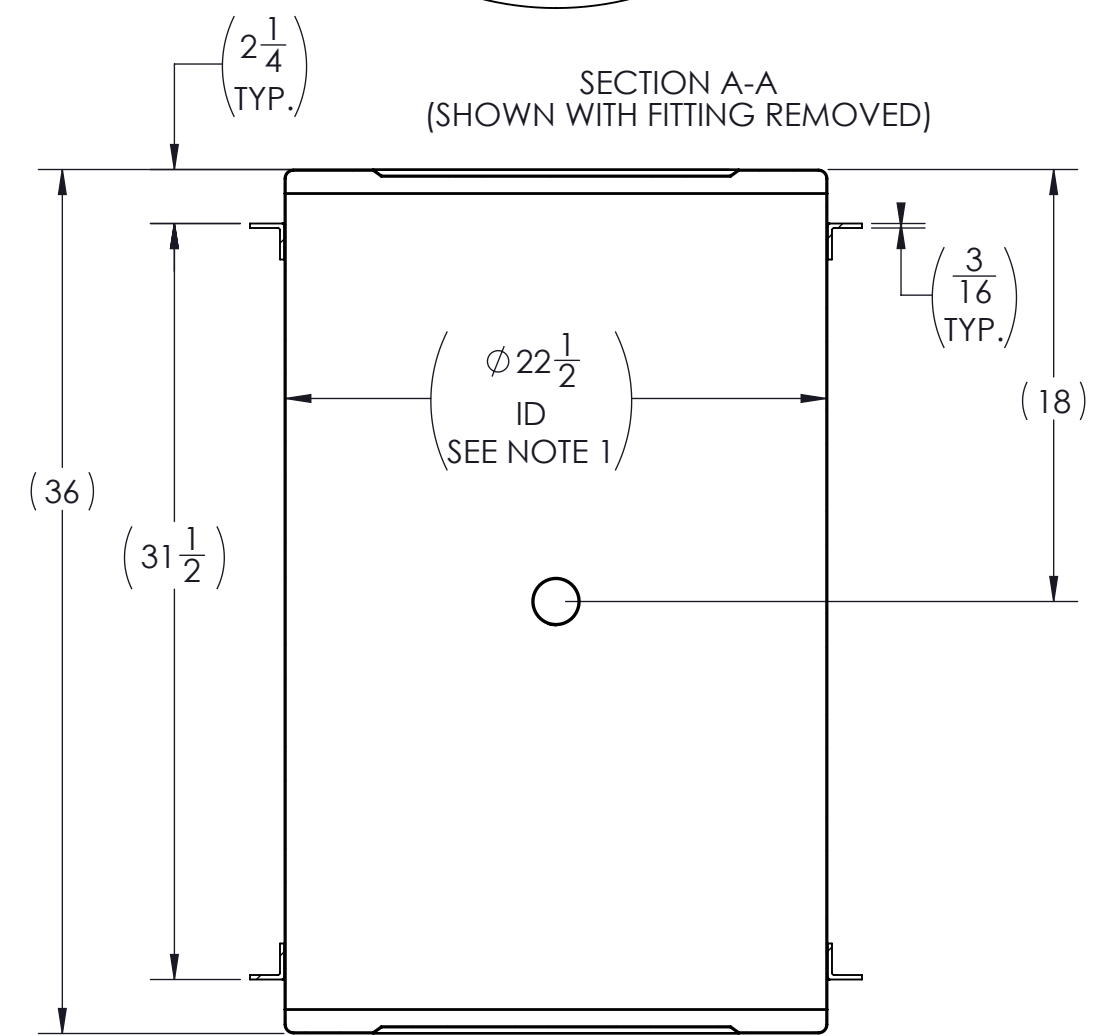
MATERIAL:

- 1. DRUM, RINGS, AND FITTING STAINLESS STEEL
- 2. MATERIAL DRUM THICKNESS 16GA

FINISH:

- 1. NONE

SECTION A-A
(SHOWN WITH FITTING REMOVED)



TARE WEIGHT:
80 lbs

THE USE OF INFORMATION CONTAINED HEREIN IS RESTRICTED FOR THE BENEFIT OF SKOLNIK INDUSTRIES ONLY. UNAUTHORIZED USE OR DISCLOSURE, COPYING OR OTHERWISE REPRODUCING (IN ANY MANNER) ANY PORTION OF THIS DRAWING WITHOUT PRIOR WRITTEN PERMISSION OF AN AUTHORIZED OFFICIAL OF SKOLNIK INDUSTRIES IS STRICTLY PROHIBITED.

APPROVAL ON FILE

FILE CREATED IN SolidWorks

UNLESS STATED OTHERWISE
(DIMENSIONS IN PARENTHESIS ARE FOR REFERENCE ONLY!!!)
ALL DIMENSIONS ARE IN INCHES
DO NOT SCALE DRAWING (SCALE = 1:8)
TOLERANCES:
FRACTIONS ±1/4



SKOLNIK INDUSTRIES, INC. 4900 SOUTH KILBOURN AVENUE, CHICAGO, IL 60632		
DESCRIPTION 60 GALLON TIGHT HEAD DRUM 2in TRI-CLOVER FITTING IN BODY CENTER STAINLESS STEEL		
REL. DATE 23-MAR-2017	PART NUM. / FILENAME IW60TB	REV A